



THE LUMIÈRE PROJECT

Bringing Light to French-Speaking Africa —

**LESSONS LEARNED ABOUT
CHURCH PLANTING + RESEARCH**

The *Lumière Project* is bringing the light of the Gospel to French-speaking Africa.



12
COUNTRIES

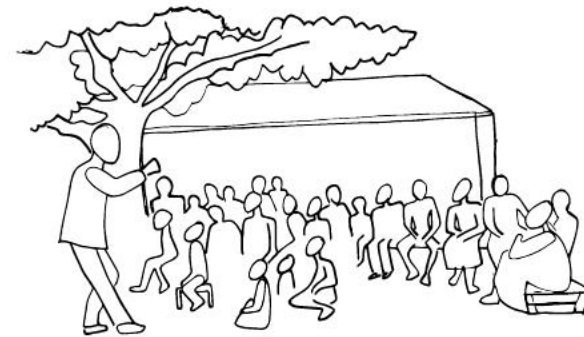
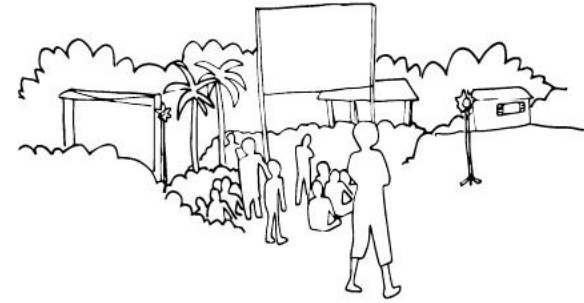
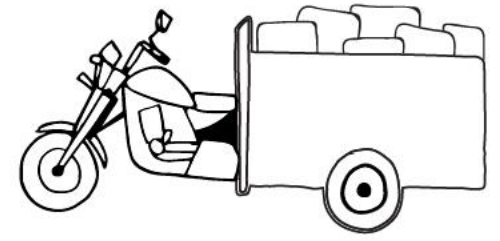


5
YEARS



3,300+
CHURCHES

HOW DO WE PLANT CHURCHES?



WHY TRACK CHURCHES?





WHAT WE TRACK



HOW WE TRACK



Evaluation Guide



Surveys

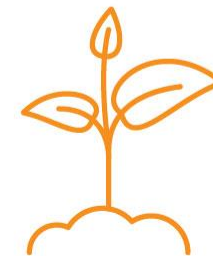


Pastor Interviews

 CHURCH PLANTED



6-12 MONTH
FOLLOW-UP SURVEY

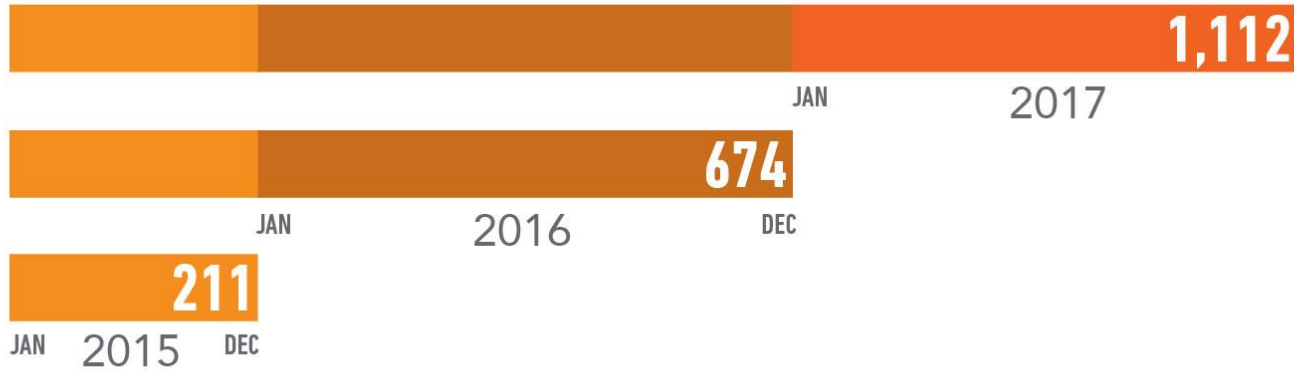


12-18 MONTH
FINAL SURVEY

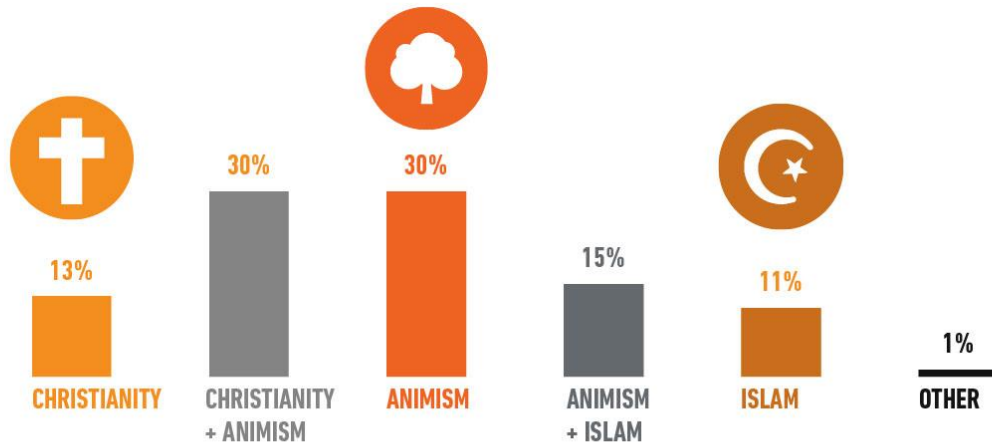
HOW WE REPORT



CHURCHES PLANTED

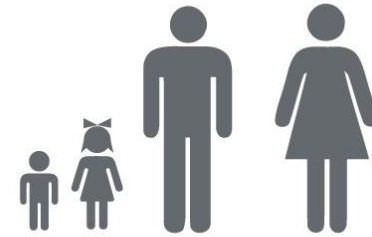


LOCAL RELIGION



70,508

Combined church attendance



29,818

Adults 21+

40,690

Children & Teens

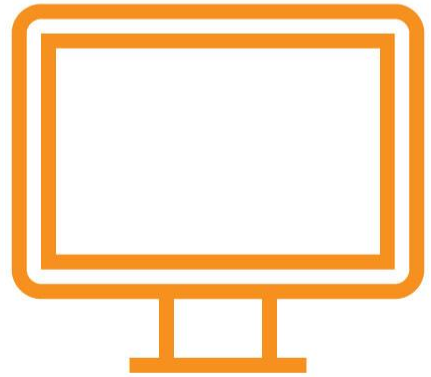
LESSONS LEARNED



LESSONS LEARNED

- COLLECTION OF DATA IS OFTEN HARDER THAN YOU THINK
- CLEANING DATA TAKES LONGER THAN YOU THINK
- YOU NEED BOTH QUALITATIVE AND QUANTITATIVE DATA TO TELL A COMPELLING AND COMPLEX STORY
- FINDING THE RIGHT INDICATORS IS REALLY IMPORTANT
- RESEARCH OFFERS A FOUNDATION THAT STORIES ALONE CANNOT
- IT IS WORTH THE EFFORT TO DO IT WELL
- THERE IS ALWAYS MORE TO LEARN

RESEARCH MATERIALS + RESULTS



oneh.pe/Lausanne2018

THE LUMIÈRE PROJECT

Bringing Light to French-Speaking Africa ———




OneHope[®]
GOD'S WORD. EVERY CHILD.